

フィンランド・ グラスアート

輝きと彩りのモダンデザイン



COLLECTION
KAKKONEN

2023.
6.24 sat -
9.3 sun

東京都庭園美術館
TOKYO METROPOLITAN TEIEN ART MUSEUM

開館時間 | 10:00-18:00 (入館は閉館の30分前まで)

休館日 | 毎週月曜日 *ただし、7月17日(月・祝)は開館、7月18日(火)は休館

主催 | 公益財団法人東京都歴史文化財団 東京都庭園美術館

共催 | S2株式会社

特別協力 | コレクション・カッコネン

協賛 | フィンエアー、フィンエアーカーゴ、イッタラ

後援 | フィンランド大使館、フィンランドセンター

年間協賛 | 戸田建設株式会社、ブルームバーグ L.P. Bloomberg Van Cleef & Arpels

上、カイ・フランク《ヨーロッパナ [KF226]》1953年 ヌータヤルヴィ・ガラス製作所

下、ティモ・サルパネヴィア《闇 [3568] [3868]》1953年 イッタラ・ガラス製作所 すべてコレクション・カッコネン所蔵 撮影: Rauno Träskelin

*本展における作家名、作品名および関係機関名称の一部は、イッタラの表記とは異なる場合がございます。



Exhibition period | Saturday, June 24 -

Sunday, September 3, 2023

Hours | 10:00-18:00 Last admission at 17:30

Closed | Mondays (except July 17), July 18



Finnish Glass Art

Sparkle and Color
in Modern Design



For Immediate Release

The Tokyo Metropolitan Teien Art Museum Presents ***Finnish Glass Art—Sparkle and Color in Modern Design***

The Tokyo Metropolitan Teien Art Museum is pleased to present the *Finnish Glass Art—Sparkles and Color in Modern Design* exhibition, from Saturday, June 24, to Sunday, September, 3, 2023. This diverse array of works in glass, with their translucence and sparkle, will be displayed in the natural light of summer, in this residence that has been transformed into a museum. Visitors will enjoy engaging in a dialogue with these works as they explore the fascination of Finnish glass, created in the context of Finland's distinctive environment and history. We will appreciate your introducing this exhibition in your media.

Exhibition details

Born in Finland's Vast Natural Beauty: Sophisticated Design and Utterly Individual Free Forms

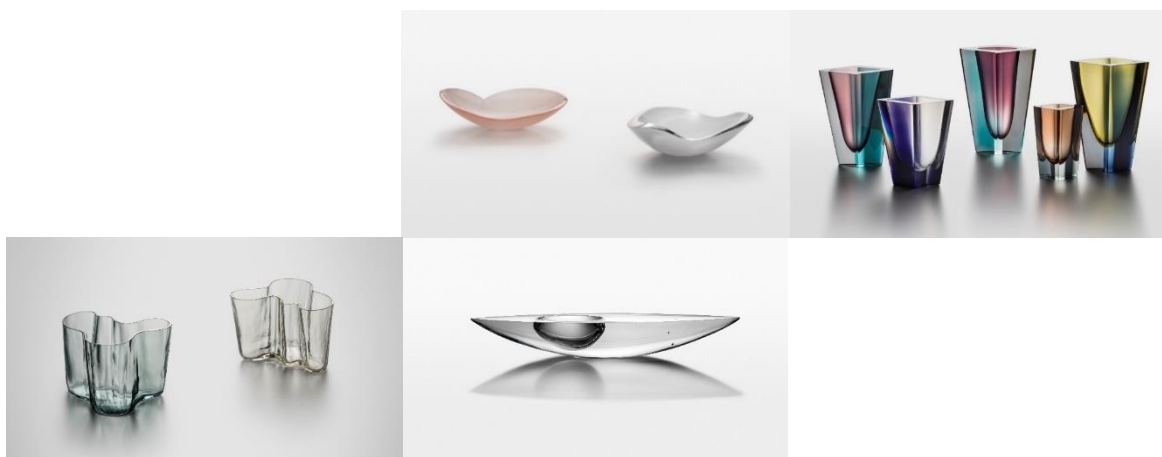
Finland is a northern European country with a rich natural environment, including vast forests and many lakes. Finland takes pride in the functionality and refined beauty of its long-loved furniture, interior design items, tableware, and other products. In recent years, their popularity has been rising in Japan.

Having become independent from Russia in 1917, Finland experienced a rising tide of national identity. Modernism was promoted in many areas, as part of the effort to build the new country and restore its people's selfhood. Glass was no exception to that trend. In the 1930s, many international exhibitions, including the Milan Triennale and world's fairs, and domestic competitions to prepare for those events, were held; in that decade, more modern design was increasingly sought after. It was in that period that Finland saw, in art glass, the emergence of products to which designers contributed a high level of artistic orientation and a distinctively Finnish quality.

After World War II, the art glass that young designers competed to create helped the country's recovery. In the 1950s, Finland's glass art made further advances, winning international renown, and becoming a prominent presence in the global design world.

This exhibition focuses on works of superb artistic quality that the designers themselves termed "art glass" and that were born through the collaboration of craftsmen and designers. It spotlights 140 superb works in tracing the pedigree of Finland's glass art, from the rise of Finnish art glass in the 1930s through its golden age, which began in the 1950s, and on to the present, represented by work by eight designers.

How did these creators address their material, glass, explore it, and broaden its creative potential? This exhibition is an opportunity to experience the fascination of these works, with their unchanging gleam, and glimpse the beliefs about glass and the challenges they faced, in each period, and the messages and ideas they incorporated in their work.



Overview of the exhibition

Exhibition	Finnish Glass Art Sparkle and Color in Modern Design
Dates	Saturday , 24 June – Sunday , 3 September , 2023 Closed every Monday (except July 17) , July 18
Hours	10 : 00 – 18 : 00 * Last admission at 17:30
Venue	Tokyo Metropolitan Teien Art Museum, Main Building & Annex
Admission	Adults = ¥1,400 (¥1,120) / University students = ¥1,120 (¥890) Middle & High school students = ¥700 (¥560) / Senior(65 and over) = ¥700 (¥560) ※Figures in parentheses are group admission fees (for groups of 20 or more). ※Admission is free for elementary and younger students and for middle school students residing in or attending school in Tokyo. ※Admission is free for visitors (and two accompanying persons) with a Physical Disability Certificate, Intellectual Disability Certificate, Rehabilitation Certificate, Mental Disability Certificate, or Atomic Bomb Survivor's Certificate. <u>This exhibition requires advance reservation</u>
Organized by	Tokyo Metropolitan Teien Art Museum, Tokyo Metropolitan Foundation for History and Culture
Co-organized by	S2 Corporation
Special cooperation by	Collection Kakkonen
Sponsored by	Finnair, Finnair Cargo, Iittala
Supported by	Embassy of Finland, Tokyo, Finnish Institute in Japan
With the co-sponsorship of	Toda Corporation, Bloomberg L.P. Bloomberg Van Cleef & Arpels



COLLECTION
KAKKONEN



*The content of the exhibition is subject to change.
*For the safety of all our visitors, we request your continued cooperation with measures to prevent the spread of infectious diseases. Please check the museum website before your visit to learn about specific measures in place.
*The latest information about this exhibition will be made available on the museum website.

Venue Information

Tokyo Metropolitan Teien Art Museum www.teien-art-museum.ne.jp

5-21-9, Shirokanedai, Minato-ku, Tokyo 050-5541-8600

[Meguro Station] 7-minute walk from JR Yamanote Line East Exit, Tokyu Meguro Line Main Exit

[Shirokanedai Station] 6-minute walk from Toei Mita Line/Tokyo Metro Namboku Line Exit 1

TEL. 03-3443-0201 / FAX. 03-3443-3228

Follow us on Facebook, Twitter, Instagram @teienartmuseum

Contact

Itaya, Saito ; Public Relations, Tokyo Metropolitan Teien Art Museum
TEL. 03-3443-0201 Mail. press@teien-art-museum.ne.jp

Touring

This exhibition will tour to other venues, as stated here.

Toyama Glass Art Museum November 3, 2022 – January 29, 2023 *End date

Ibaraki Ceramic Art Museum March 18 – June 11, 2023 *End date

Hagi Urugami Museum September 16 – December 3, 2023

Museum of Modern Ceramic Art, Gifu December 16, 2023 – March 3, 2024

The Museum of Ceramic Art, Hyogo March 16 – May 26, 2024

Composition of the exhibition

Section 1: The Emergence of Finnish Glass Art

In Finland, which secured its independence from Russia in 1917, modernism was being promoted in a variety of fields, including glass. In the 1930s, each of the glassworks held many domestic competitions in preparation for participating in the Milan Triennale, world's fairs, and other international events, and outstanding designers engaged in producing works in glass.

Here we present work by leading designers from that period of emergence, the pioneers who carved the name "Finland's Glass Art" internationally on the world of modern design.

Alvar Aalto , Aino Aalto/Gunnel Nyman

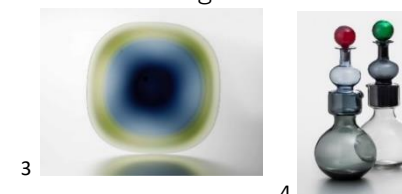


Section 2: The Masters of the Golden Age

Finland faced dire poverty after World War II, but those adverse conditions spurred the establishment of its people's identity as Finns, while high quality, superbly designed products provided the motive force for rebuilding Finland's position in international society.

From the 1950s on, Finnish "Art Glass," glass products with a strong luxury-class orientation, and "Unique Pieces" were shown in increasing numbers at international exhibitions. These works contributed to Finland's acquiring both international recognition and necessary foreign exchange. The result was growing brilliant renown and firmly establishing Finland's reputation as a great power in the world of design. This section introduces four designers who underpinned the success of Finnish glass art throughout their careers, from the 1950s, the Golden Age, on. Please enjoy the many masterpieces that they created in collaboration with glass craftsmen.

Kaj Franck/Tapio Wirkkala
Timo Sarpaneva/Oiva Toikka

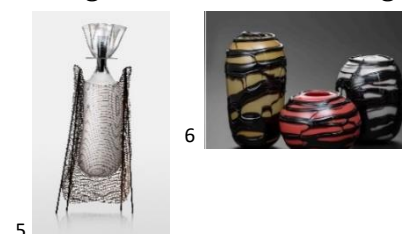


Section 3: Finnish Glass Art Today

Glassworks, designers, and craftsmen: their relationship of mutual trust underlies the creation of the host of superb works that define Finland's glass art today. In contemporary society, with globalism on the rise, the production system is changing, glassworks, inviting designers from outside, are changing their styles, and the situation is evolving.

This section introduces the creations of two artists who are now energetically engaged in their work, have discovered their own distinctive approaches while learning from traditional techniques, and are producing work with outstanding artistic qualities.

Markku Salo/Joonas Laakso



*Please note that the names of some of the artists, works, and related institutions in this exhibition may differ from those used by iittala.

1. Alvar&Aino Aalto 《Aalto's Flower》 1939 Karhula Glassworks
 2. Gunnel Nyman 《Wise Virgins》 1937 Riihimäki Glassworks
 3. Timo Sarpaneva 《Sun in the Wood》 end of 1950s Iittala Glassworks
 4. Kaj Franck 《Kremlin Bell [KF1500, KF500]》 1956 Nuutajärvi Glassworks
 5. Markku Salo 《Canned Flower Power》 2009 Nuutajärvi Glassworks
 6. Joonas Laakso 《It Looks Like Licorice》 2012, 2013 Lasismi
- *All the exhibited works are from Collection Kakkonen Photo : Rauno Träskelin

Related programs

Programs related to this exhibition will be added during the exhibition period. Information about them will be posted on the museum's website as soon as details are settled.

① **G(ALL)ery Day : Slow Appreciation Day**

Wouldn't you like to relax and enjoy the museum at your own pace?

Both visitors with disabilities and others are invited to enjoy our gallery for all day—G(ALL)ery Day.

The number of visitors will be limited on this day to create a more comfortable environment for appreciating the exhibition without feeling rushed or crowded. Both people who feel uneasy in a congested museum filled with people and people needing wheel chairs or attendants can enjoy this relaxed museum experience.

> > Date and time: Wednesday, August 9, 10:00 – 18:00 (last entry at 17:30)

*The same online reservation system as usual can be used. (Tickets go on sale in mid July.) For details, see G(ALL)ery Day on our website.

*Visitors with a Physical Disability Certificate, Intellectual Disability Certificate, Rehabilitation Certificate, Mental Disability Certificate, or Atomic Bomb Survivor's Certificate do not need to make reservations. Please speak to the reception staff when you arrive.

② **Baby Day**

A Special Day for Families with Babies

The museum will be open for Baby Day on one of its usual closing days. During summer vacation, please bring your baby—and its siblings—to the museum.

> > Date and time: Monday, August 21, 10:00 – 15:00

Available for up to 60 babies and their caregivers.

*Please visit the museum website to apply for a ticket, learn about other details, and get the latest news.

Photography

During this exhibition, photography is permitted in part of the Main Building and in the Annex.

When photographing, please observe the following rules and follow museum staff members' instructions:

1. Do not engage in actions that interfere with other visitors' enjoyment of the exhibition.
2. Do not use flash, reflectors, tripods or unipods, selfie sticks, or telephoto lenses.
3. A staff member may inform you that photography is prohibited for safety reasons.
4. Do not take videos.
5. Do not photograph from directly above an exhibit or bend or lean over it to photograph it, because you might drop your equipment on the exhibit or accidentally touch it.
6. Photography is permitted for non-commercial, personal use only. To conduct commercial photography, you must submit an application in advance.
7. When displaying your photographs on social media, respect the right to privacy of other visitors who may be included in them. The museum accepts no responsibility for any such privacy violations.
8. Any other actions that endanger the works or the buildings are prohibited.

Official Catalogue

The catalogue can be purchased in our Museum Shop and in bookstores .

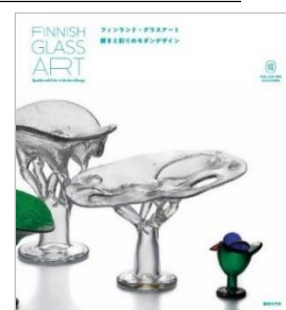
Title: *Finnish Glass Art—Sparkle and Color in Modern Design*

Format: A4 format, 232 pages

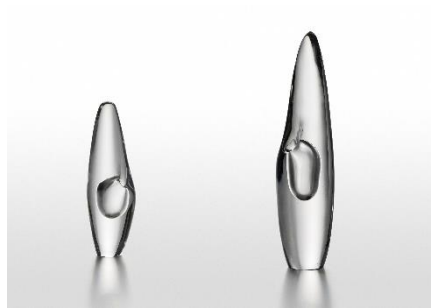
; published by Kokushokankokai, Inc.

Price: ¥2,970, including tax

During the exhibition, it can be purchased at our Museum Shop for ¥2,700, including tax (special on-site price).



© Images for publicity use:



1	2	3	4
5	6	7	
8	9	10	
11	12	13	

1. Alvar&Aino Aalto 《Aalto's Flower》 1939 Karhula Glassworks

2. Gunnel Nyman 《Streamer》 1947 Nuutajärvi Glassworks

3. Gunnel Nyman 《Calla》 1946 Riihimäki Glassworks

4. Gunnel Nyman 《Birch Forest》 1946 Riihimäki Glassworks

5. Kaj Franck 《Art-object, unique》 1966 Nuutajärvi Glassworks

6. Kaj Franck 《Crucian Carp》 1953 Nuutajärvi Glassworks

7. Kaj Franck 《Art-object, unique》 first half of 1970s Nuutajärvi Glassworks

8. Timo Sarpaneva 《Arkipelago》 1978 Iittala Glassworks

9. Timo Sarpaneva 《Kayak》 1954 Iittala Glassworks

10. Timo Sarpaneva 《Orchid》 1953 Iittala Glassworks

11. Markku Salo 《Art-object, unique》 2017 Lasikomppania

12. Markku Salo 《Art-object, unique》 2017 Lasikomppania

13. Joonas Laakso 《Zig Zag》 2014–2017 Lasismi

the exhibited works are from Collection Kakkonen

Photo : Rauno Träskelin

*Please put the above credit after the caption for each of the works.